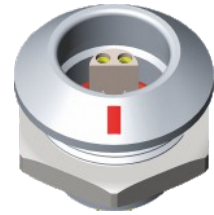
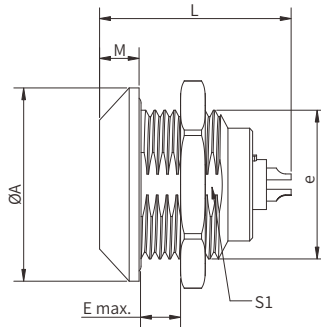


**FSG Fixed Socket, Key(G), Nut Fixing**

- Connector series: FSG
- Contact: Hermaphroditic
- Key: G
- Locking type: Self-locking
- Orientation type: Straight
- Part No.: FSG.XL.XXX.CLL
- Mated with: PSG/PAG series

Note: "X" refers to part number definition on page 103



**General Information**

Ambient temperature:	-55°C ~ + 200°C
Endurance:	>5000 cycles
Insulator:	PEEK
Connector contacts:	Brass with gold plated
Coupling nut/screw:	Brass with nickel plated
Housing:	Brass with Cr plated

Seal/O-ring:	Silicone
Insulation resistance:	≥100MΩ
IP rating:	IP68
Shielding efficiency:	at 10MHz>95dB/at 1GHz>80dB
Salt spray corrosion test:	>144h

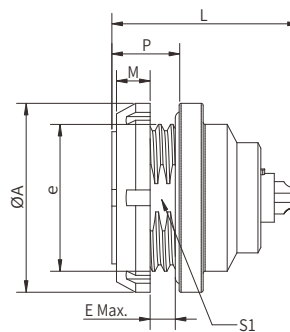
Size	Dimensions(mm)					
	A	e	E	L Max	M	S1
0L	18	M14*1.0	5.5	21.7	4.0	12.5
1L	20	M16*1.0	9.0	27.0	4.5	14.5
2L	25	M20*1.0	9.0	30.7	5.0	18.5

Note: Panel cut-out (page 140)

**SRG Fixed Socket, Key(G), Nut Fixing, Front Fasten**

- Connector series: SRG
- Contact: Hermaphroditic
- Key: G
- Locking type: Self-locking
- Orientation type: Straight
- Part No.: SRG.XL.XXX.CLL
- Mated with: PSG/PAG series

Note: "X" refers to part number definition on page 103



**General Information**

Ambient temperature:	-55°C ~ + 200°C
Endurance:	>5000 cycles
Insulator:	PEEK
Connector contacts:	Brass with gold plated
Coupling nut/screw:	Brass with Cr plated
Housing:	Brass with Cr plated

Seal/O-ring:	Silicone
Insulation resistance:	≥100MΩ
IP rating:	IP68
Shielding efficiency:	at 10MHz>95dB/at 1GHz>80dB
Salt spray corrosion test:	>144h

Size	Dimensions(mm)						
	A	e	E	L Max	M	P	S1
0L	18	M14*1.0	3.5	21.7	3.5	7.0	12.5
1L	20	M16*1.0	6.5	27.0	3.5	10.0	14.5
2L	25	M20*1.0	6.5	30.7	3.5	10.0	18.5

Note: Panel cut-out (page 164)